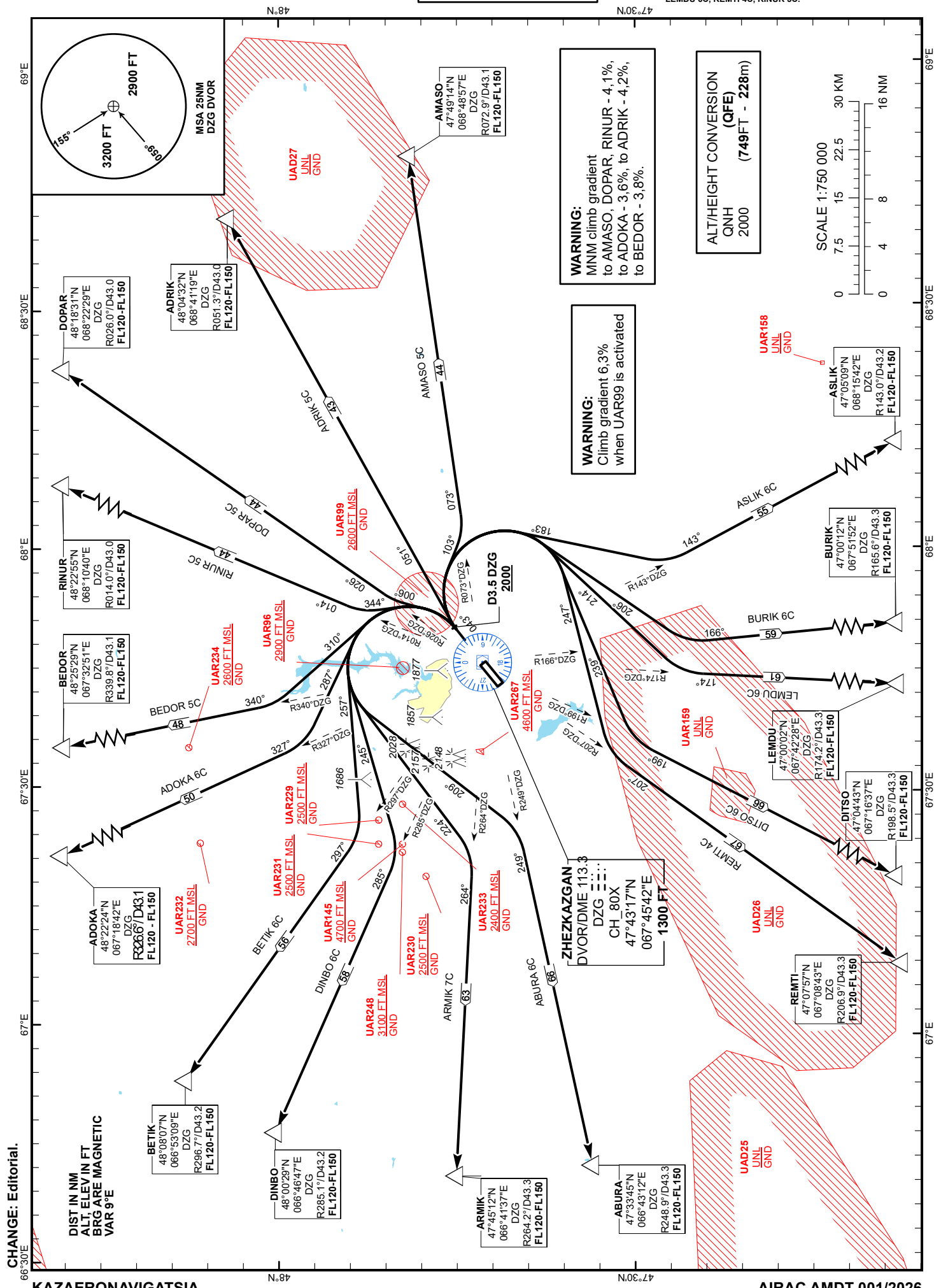


**ZHEZKAZGAN**  
**RWY 04**



STANDARD DEPARTURE ROUTES – INSTRUMENT (SID) ZHEKZAGAN RWY 04

<b>RINUR 5C</b> After take-off climb straight ahead to 2000 or above. At 3.5NM DZG, turn LEFT on track 344° until intercept R014°DZG, then proceed on track 014° to RINUR (R014.0° D43.0NM DZG). Cross RINUR at FL120 - FL150.	<b>REMTI 4C</b> After take-off climb straight ahead to 2000 or above. At 3.5NM DZG, turn RIGHT on track 247° until intercept R207°DZG, then proceed on track 207° to REMTI (R206.9° D43.3NM DZG). Cross REMTI at FL120 - FL150.
<b>DOPAR 5C</b> After take-off climb straight ahead to 2000 or above. At 3.5NM DZG, turn LEFT on track 006° until intercept R026°DZG, then proceed on track 026° to DOPAR (R026.0° D43.0NM DZG). Cross DOPAR at FL120 - FL150.	<b>ABURA 6C</b> After take-off climb straight ahead to 2000 or above. At 3.5NM DZG, turn LEFT on track 209° until intercept R249°DZG, then proceed on track 249° to ABURA (R248.9° D43.3NM DZG). Cross ABURA at FL120 - FL150.
<b>ADRIK 5C</b> After take-off climb straight ahead to 2000 or above. At 3.5NM DZG, turn RIGHT on track 051° to ADRIK (R051.3° D43.0NM DZG). Cross ADRIK at FL120 - FL150.	<b>ARMIK 7C</b> After take-off climb straight ahead to 2000 or above. At 3.5NM DZG, turn LEFT on track 224° until intercept R264°DZG, then proceed on track 264° to ARMIK (R264.2° D43.3NM DZG). Cross ARMIK at FL120 - FL150.
<b>AMASO 5C</b> After take-off climb straight ahead to 2000 or above. At 3.5NM DZG, turn RIGHT on track 103° until intercept R073°DZG, then proceed on track 073° to AMASO (R072.9° D43.1NM DZG). Cross AMASO at FL120 - FL150.	<b>DINBO 6C</b> After take-off climb straight ahead to 2000 or above. At 3.5NM DZG, turn LEFT on track 245° until intercept R285°DZG, then proceed on track 285° to DINBO (R285.1° D43.2NM DZG). Cross DINBO at FL120 - FL150.
<b>ASLIK 6C</b> After take-off climb straight ahead to 2000 or above. At 3.5NM DZG, turn RIGHT on track 183° until intercept R143°DZG, then proceed on track 143° to ASLIK (R143.0° D43.2NM DZG). Cross ASLIK at FL120 - FL150.	<b>BETIK 6C</b> After take-off climb straight ahead to 2000 or above. At 3.5NM DZG, turn LEFT on track 257° until intercept R297°DZG, then proceed on track 297° to BETIK (R296.7° D43.2NM DZG). Cross BETIK at FL120 - FL150.
<b>BURIK 6C</b> After take-off climb straight ahead to 2000 or above. At 3.5NM DZG, turn RIGHT on track 206° until intercept R166°DZG, then proceed on track 166° to BURIK (R165.6° D43.3NM DZG). Cross BURIK at FL120 - FL150.	<b>ADOKA 6C</b> After take-off climb straight ahead to 2000 or above. At 3.5NM DZG, turn LEFT on track 287° until intercept R327°DZG, then proceed on track 327° to ADOKA (R326.6° D43.1NM DZG). Cross ADOKA at FL120 - FL150.
<b>LEMDU 6C</b> After take-off climb straight ahead to 2000 or above. At 3.5NM DZG, turn RIGHT on track 214° until intercept R174°DZG, then proceed on track 174° to LEMDU (R174.2° D43.3NM DZG). Cross LEMDU at FL120 - FL150.	<b>BEDOR 5C</b> After take-off climb straight ahead to 2000 or above. At 3.5NM DZG, turn LEFT on track 310° until intercept R340°DZG, then proceed on track 340° to BEDOR (R339.8° D43.1NM DZG). Cross BEDOR at FL120 - FL150.
<b>DITSO 6C</b> After take-off climb straight ahead to 2000 or above. At 3.5NM DZG, turn RIGHT on track 239° until intercept R199°DZG, then proceed on track 199° to DITSO (R198.5° D43.3NM DZG). Cross DITSO at FL120 - FL150.	